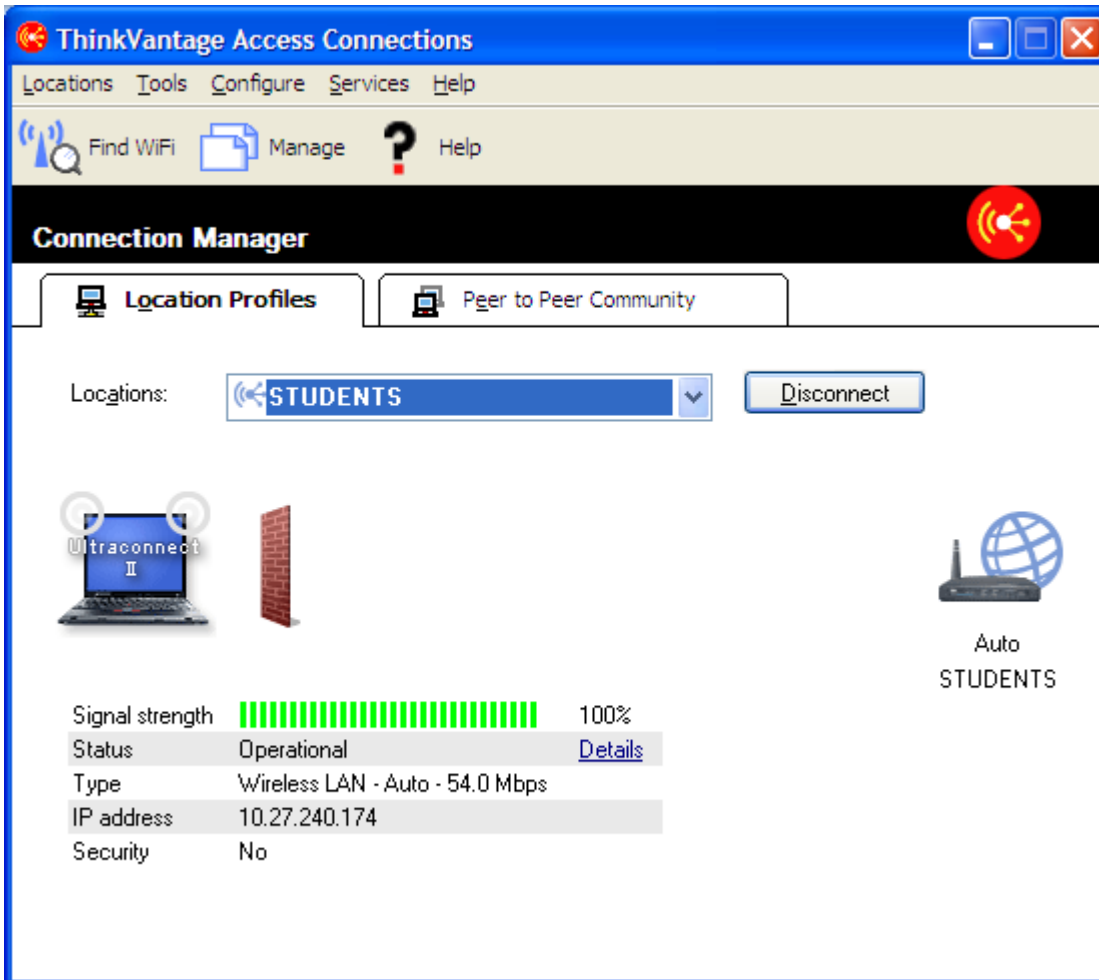
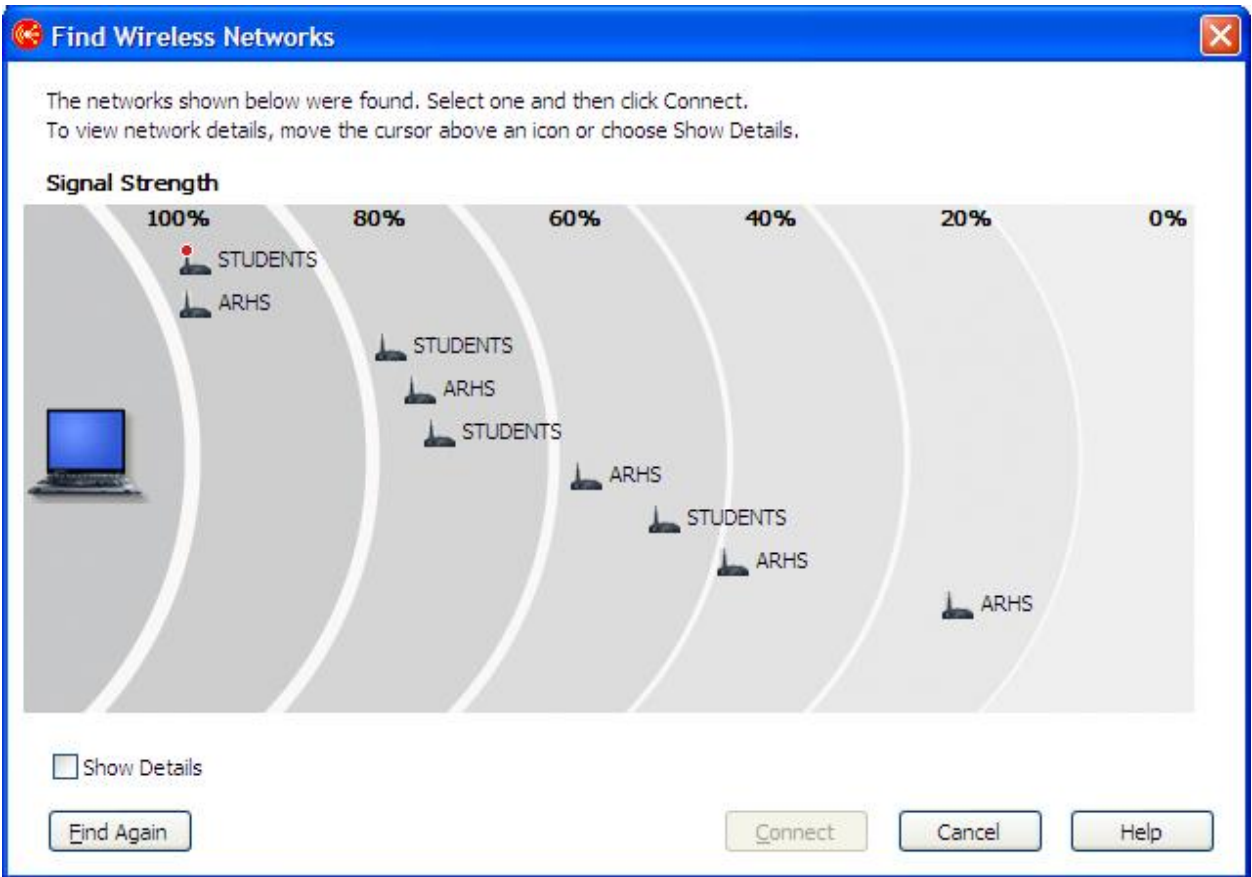


Connecting to a Secure, Password Protected Network at Home

There have been questions about connecting to a wireless network at home. Please let me reiterate what was mentioned at Laptop Distribution day. It is impossible for the Technology Support Team to provide support to over 300 families with 300 different networks. This being said, listed below are the instructions to connect to most password protected network.

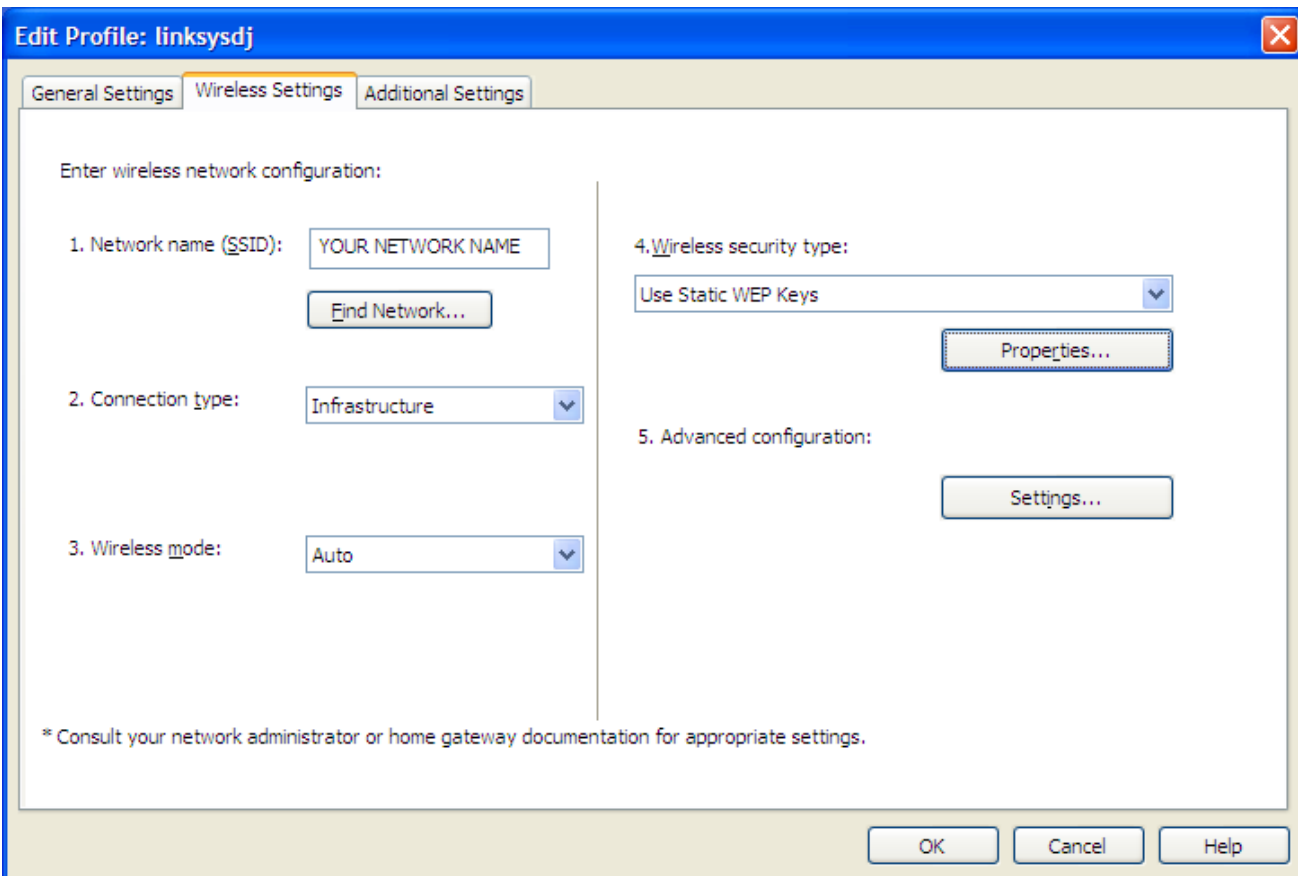
After launching the **ACCESS CONNECTIONS** program from your tablet, click on **FIND WIFI**





Your network SSID will be displayed. Click on the network name and then click **CONNECT**.

After a moment, you will be brought to the following screen:



Make sure your settings follow as such:

1. Network name (SSID): ***YOUR NETWORK NAME (this will be different for everyone)***
2. Connection type: **Infrastructure**
3. Wireless mode: **Auto**
4. Wireless security type: **Use Static WEP Keys**
5. Advanced configuration

Since your network is password protected, you will need to click on the **PROPERTIES** button underneath #4.

Static WEP Settings

Enter your static WEP key settings:

Access point authentication: Open

Data encryption: WEP-64 bits

Wireless Network (WEP) Security Keys

Encrypt data transmission using: Key 1

Use 5 alphanumeric characters (0-9, a-z)

Use 10 hexadecimal digits (0-9, a-f)

Key 1: *****

Key 2:

Key 3:

Key 4:

Use this profile to connect during Windows log on

OK Cancel

Most networks require a 10 character password so make sure the **USE 10 HEXADECIMAL DIGITS (0-9, a-f)** option is selected. Next, enter your password in the **KEY 1** box.

Press **OK** until you are returned to the main **ACCESS CONNECTIONS** screen. If the program asks you to save the profile of this network, choose **YES**.

Again, this should alleviate the issues that most families are having connecting. Lenovo, the manufacturer of these laptops, provides additional support on their website:

<http://www.lenovo.com>