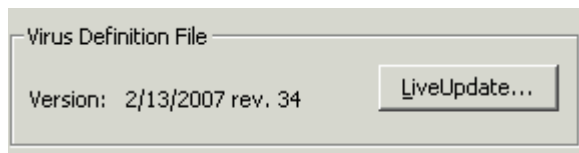


This is the SYMANTEC slanted shield

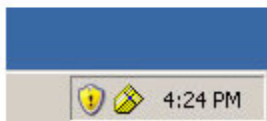


- ✓ You should get in the habit of clicking on the yellow shield to see if the definitions are up to date. If you are away from Rummel but have wireless access, you can manually update the definitions by clicking on live update.



- ✓ Be sure to watch for the Microsoft update shield and install critical updates when asked (EXPRESS)

You will see an alert pop up in your notification area (lower right corner of screen). The icon should appear appear as an upright Shield. See below. Notice the difference between the High Priority shield on the left and the Symantec AntiVirus shield on the right.



If you place the mouse over the icon, you will see a message similar to the one below.

